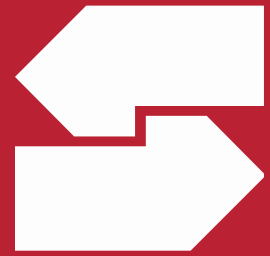


FOR SALE or LEASE

1,730 SF Office Condominium
57 Obery Street, Unit #1, Plymouth, MA



Unit Size:	1,730 SF on the first floor. Consisting of 6 offices, a conference room, a small bullpen and a kitchenette. Lower level storage space of 1,700 SF +/- is also included.
Utilities:	Electric, Municipal Water & Sewer, Natural Gas.
Monthly Condo Fee:	\$960.00
Real Estate Taxes:	\$5,598.00
Drive Up Window:	This unit was formerly a bank branch. It has a drive up window with a canopy at the rear of the unit that could be revitalized.
Location:	Two Minutes to Route 3. Across the street from the Plymouth Registry of Deeds and the Plymouth District Courthouse.
For Sale or Lease:	\$425,000. Lease it at \$21.00 SF Plus Condo Fee & Utls.



**SOUTHEAST
COMMERCIAL
REAL ESTATE, INC**

MICHAEL GIANCOLA, SIOR
Southeast Commercial Real Estate, Inc.
3131 Cranberry Highway, P.O. Box 570
East Wareham, MA 02538

| 508.759.3030
| mgiancola@ccim.net
| southeastcommercialre.com



No.	Description	Date



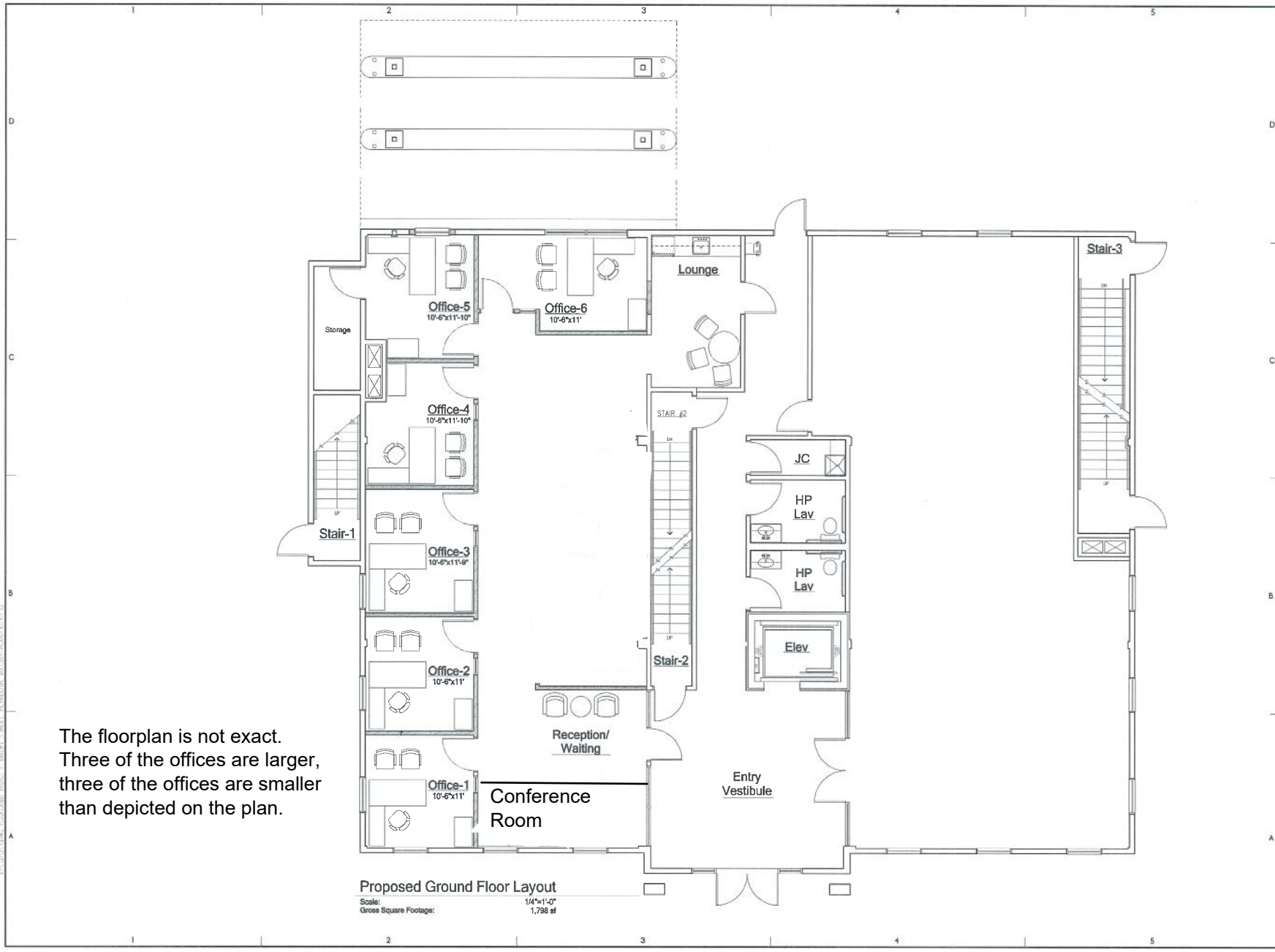
Proposed Alterations
57 Obery Street, Plymouth, MA



Project No.	12057
Date	5-22-13
Drawn	GFB
Checked	GFB

A1

FOR THE ARCHITECT'S USE ONLY
NOT TO SCALE
DO NOT ALTER WITHOUT THE ARCHITECT'S PERMISSION

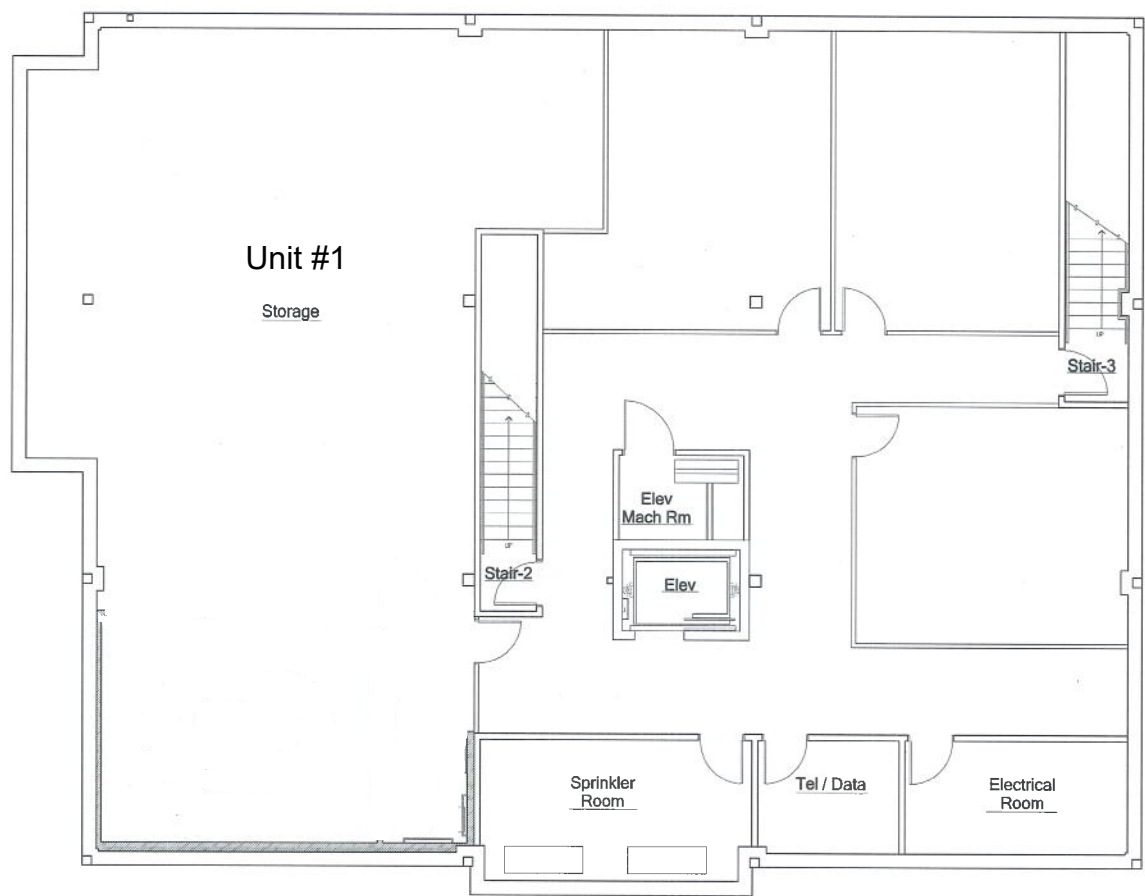


The floorplan is not exact.
Three of the offices are larger,
three of the offices are smaller
than depicted on the plan.

Proposed Ground Floor Layout
Scale: 1/4"=1'-0"
Gross Square Footage: 1,786 sf



No.	Description	Date



Proposed Basement Level Layout
Scale: 1/4"=1'-0"



Where Each Relationship Matters[®]
Proposed Alterations
57 Obery Street, Plymouth, MA



Sheet No.	12057
Date	5-22-13
Author	GFB
Checker	GFB

A2

© 2013 DRL ARCHITECTS, ALL RIGHTS RESERVED. THIS DOCUMENT IS THE PROPERTY OF DRL ARCHITECTS AND IS NOT TO BE REPRODUCED OR TRANSMITTED IN ANY FORM OR BY ANY MEANS, ELECTRONIC OR MECHANICAL, WITHOUT THE EXPRESS WRITTEN PERMISSION OF DRL ARCHITECTS.

06042413-1057.rvt - 04/23/2013 10:56:23 AM - 0000 - STREET POND/DRAWING - 0000 - STREET POND/DRAWING - 4.11